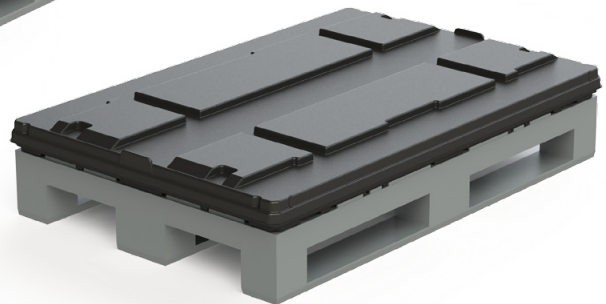
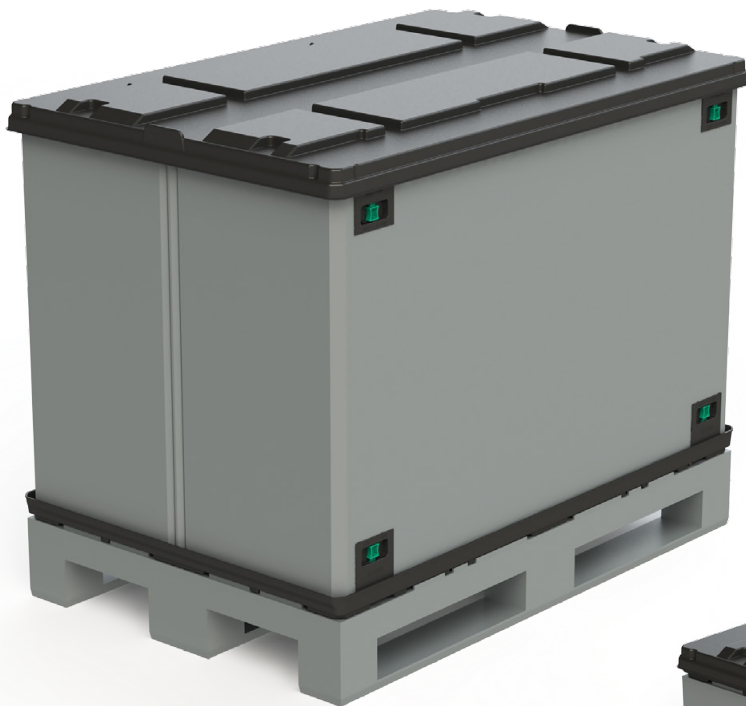


## ECOPACK<sup>®3</sup> PALLET (H1)

The extremely light returnable container enables quick and easy conversion of an H1 pallet to a box. Its stable construction makes the ECOPACK<sup>®3</sup> PALLET perfectly suited for transportation and storage of heavy loads. The ECOPACK<sup>®3</sup> PALLET is great to use in the food industry because it meets the toughest hygiene standards. The container locks into place on the pallet and stacks without slippage due to the shape of the base and cover. The modular application of cassette and pallet allows separate return flows of pallet and "box".



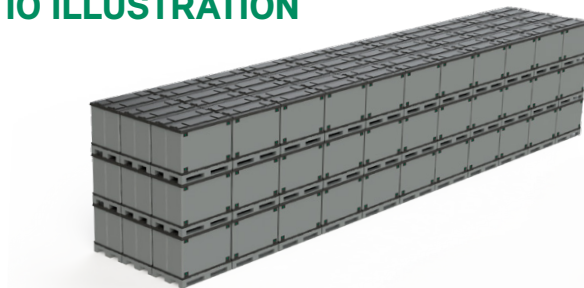
### Specifications

- 100% recycled HDPE single sheet lid and tray
- Easy to clean, meets the toughest hygiene standards
- High load capacity
- High-bay storage
- Extremely light weight cassette (= folded box)
- Compatible with most open deck H1 pallets (check required)
- Options: Quick-locks (loss of hygienic feature); Twinsheet lid
- Also available in lease

### Standard dimensions

- EP1208 (1220\*820mm).
- Other dimensions upon request  
Height range: 500 up to 960mm

## RETURN RATIO ILLUSTRATION



## MARKETS & APPLICATIONS

- Packed Food
- Pharmaceuticals
- Fast Moving Consumer Goods
- Logistic Centers
- Automotive
- General industry