

ECOPACK^{®3} CLASSIC

Because of its light weight, easy handling and exemplary durability, the **ECOPACK^{®3} CLASSIC** has become the standard in the automotive industry for returnable modular packaging. It has the highest possible return ratio with its nestable pallet design. The integrated sleeve locking system secures handling safety and system integrity during transport. Customized inserts and dividers optimize space efficiency and product protection.



Specifications

- 100% recycled HDPE twin-sheet pallet and lid
- Polypropylene sleeve (colors and prints available)
- Custom loading options (loading door, removable front panel)
- Set of 3 skids/runners optional
- Also available in lease
- Tested according to: ISO 13194 (2011), ISO 8611:2011, ASTM D 642, EN 13626

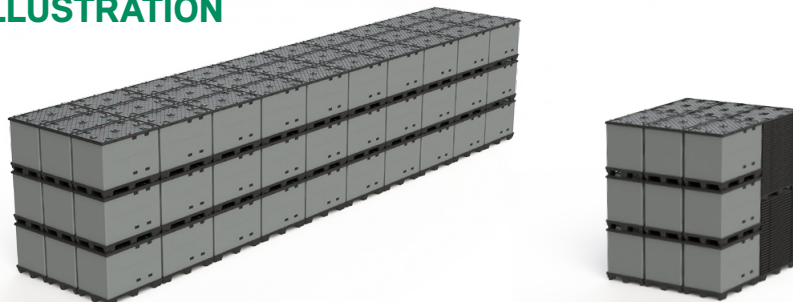
Standard base dimensions

- EC1208 (1200*800 mm)
- EC1210 (1200*1000 mm)
- EC1308 (1350*820 mm)
- EC1512 (1500*1200 mm)
- EC1612 (1600*1200 mm)

Other dimensions upon request

Height range: 500 up to 1450 mm

RETURN RATIO ILLUSTRATION



MARKETS & APPLICATIONS

- Automotive
- Domestic appliances
- General industry