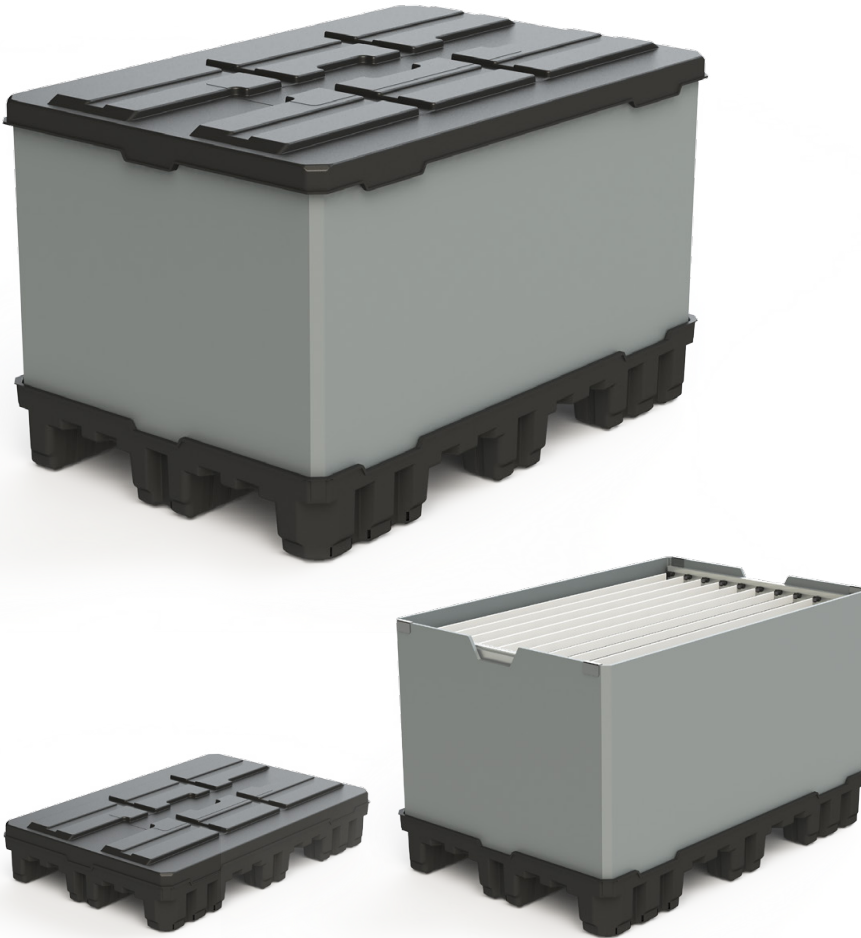


ECOPACK^{®3} KIT

The ECOPACK^{®3} KIT is the new revolutionary “Foldable Large Container” optimized for single unit return. Advantages are unique safety, versatility, ergonomics and ease of use combined with the quality and durability of the ECOPACK^{®3} CLASSIC. The kit inner height is adjustable, allowing for optimized space efficiency on returns.

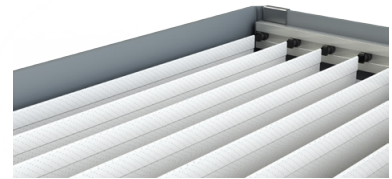


Specifications

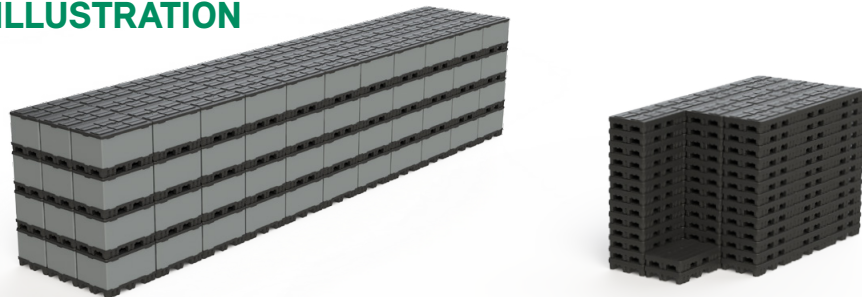
- 100% recycled HDPE twinsheet pallet and lid
- Polypropylene sleeve (colors and prints available)
- Flat pallet deck
- Full water and dust protection
- Load-centering feet design
- Ergonomic sleeve locking system
- Optimized inner dimensions
- Integrated return collar in lid
- Custom loading door
- Integrated runner design (runners optional)
- Stacking compatibility with any (single) other FLC
- Also available in lease

Standard base dimensions

- EK1208 (1220*820 mm).
- Other dimensions upon request
Height range: 500 up to 1450 mm



RETURN RATIO ILLUSTRATION



MARKETS & APPLICATIONS

- Automotive
- Packed Food
- Fast Moving Consumer Goods
- Logistic Centers
- Pharmaceuticals
- General industry